

SOUTH MELBOURNE 24A Emerald Hill Place



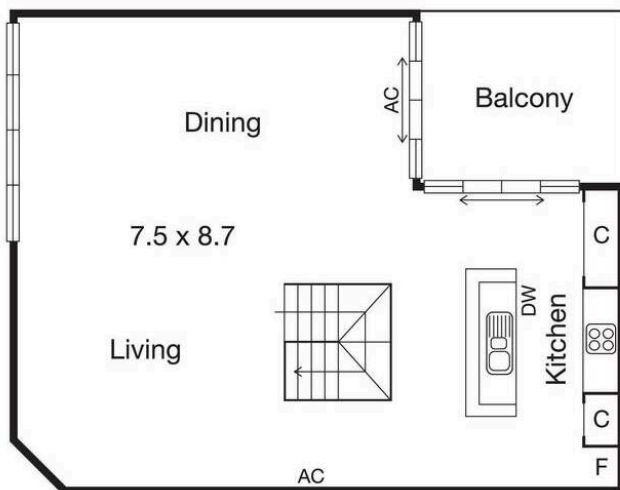
CAYZER

SOUTH MELBOURNE 24A Emerald Hill Place

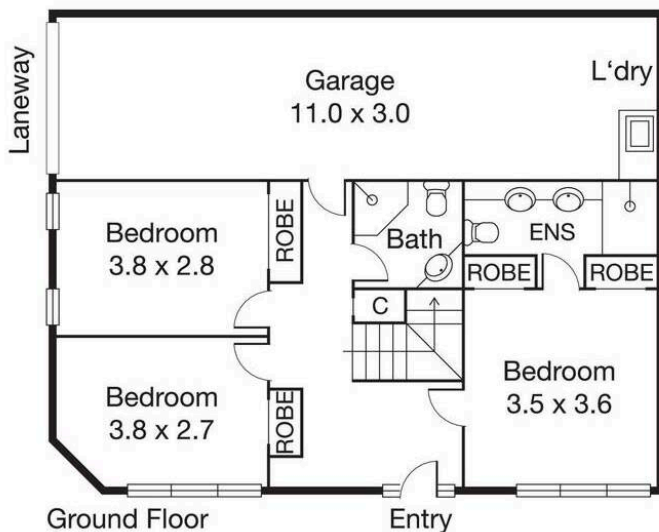
PERFECTLY LOCATED HIDDEN GEM

- Located between Clarendon St & bustling South Melbourne Market
- Dual-level warehouse conversion set quietly at the rear of a development of two
- A hidden gem that will tick all your boxes

Ground floor: master bedroom with double built-in robes & private large ensuite, two double bedrooms each with built-in robes & central bathroom. Secure garage with laundry facilities. Second floor: spacious living & dining area with polished floorboards, bathed in natural light & views across parkland & tree tops. Well-appointed contemporary kitchen with plenty of storage & stainless-steel appliances, leading to a private balcony. Enter via Bank Street, Tom Uren Lane or Park Place.



First Floor



Ground Floor

🏠 3 📄 2 🔄 1

AUCTION Saturday 15th May at 11:00am

Inspection As advertised or by appointment

Contact Charlotte Broussard 0403 451 899
Michael Szulc 0417 122 809
Geoff Cayzer 03 9690 9782

Mel Ref 57 G2



CAYZER

Albert Park 330 Montague Street 03 9699 5999
Port Melbourne 370 Bay Street 03 9646 0812

cayzer.com.au